

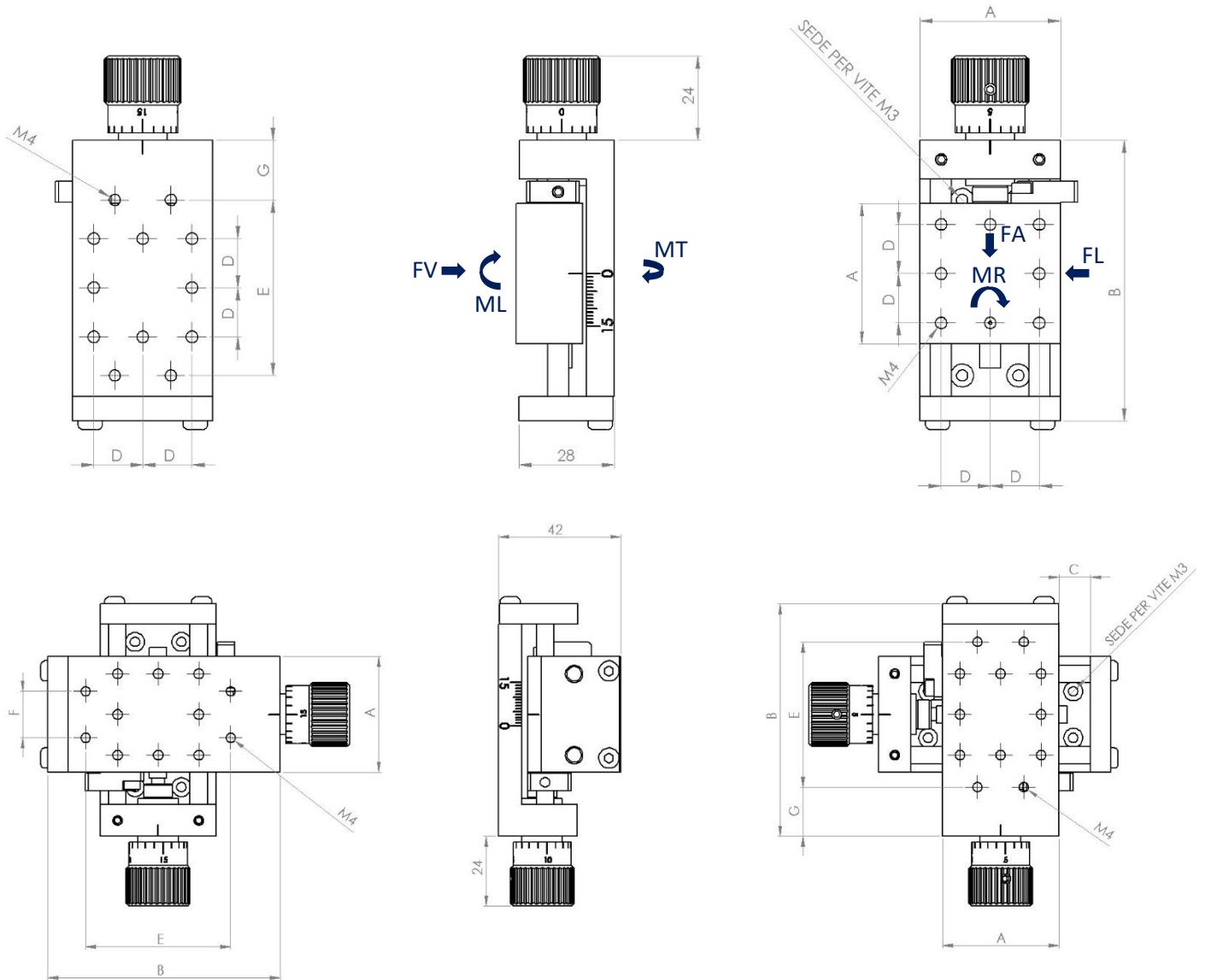
Control Slides

Series TRP

There are currently two sizes, with travel from 15 to 50 mm. They are made with an anodized aluminium body; the slide is supported on cylinders made of hardened and ground steel or stainless steel (on request), with pitch 1 adjustment screw. Sliding on self-lubricating bronze bushings.

This type of construction makes the product usable even in clean environments such as in the pharmaceutical, medical and food sectors, etc., and despite being very small, they provide high stability to the devices they are applied to. Accessories are possible for angular and multi-axis positioning and for motor drives.

Control slides Series TRP



Control screw $\varnothing 6$, pitch 1.

Positioning accuracy 0.05 mm.

Position indication by engraved scale on the side.

Travels available: 15, 30, 50; on a single-axis or with crossed movement

PERMISSIBLE STATIC LOADS AND MOMENTS (INDICATIVE)

FV/FL= 50 N FA= 30 N ML/MR/MT= 2 Nm

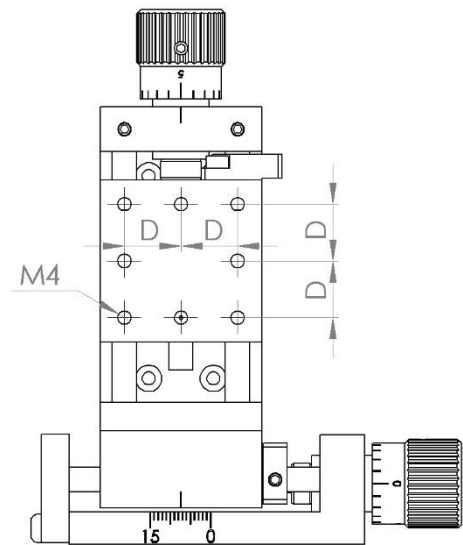
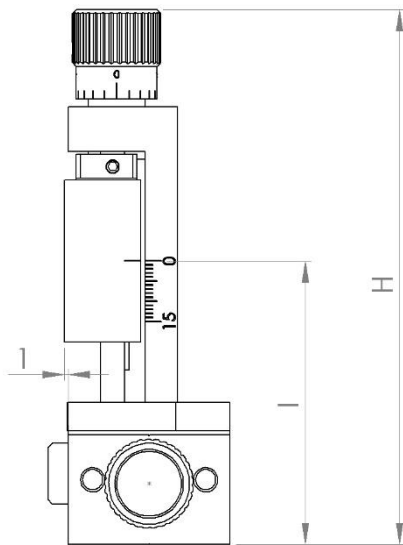
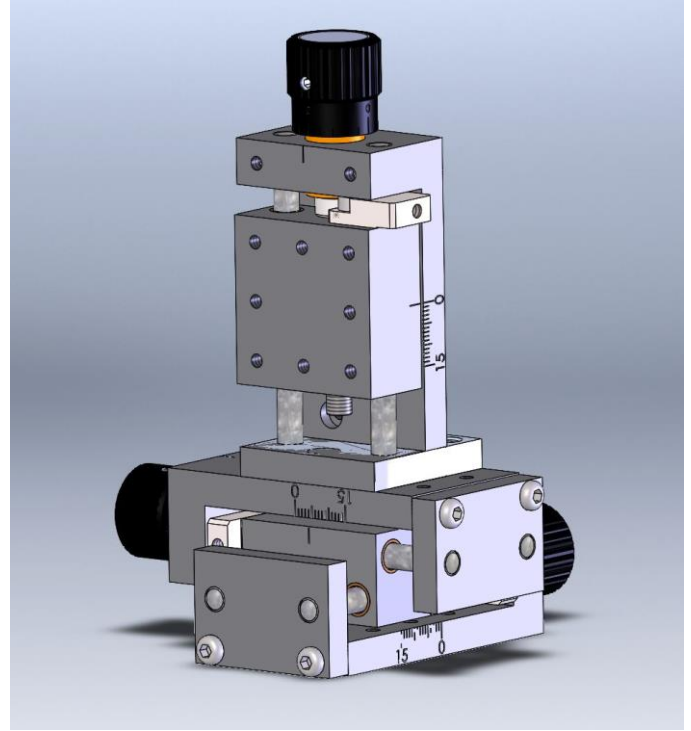
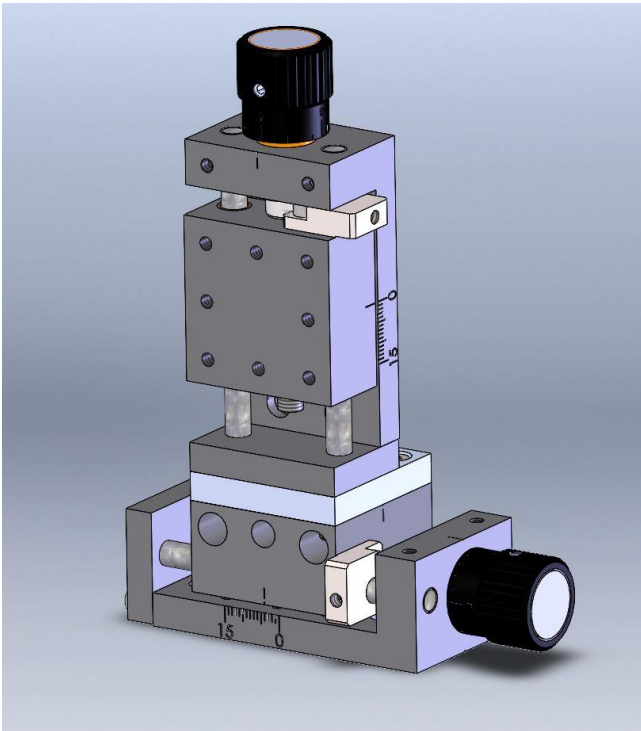
TABLE	A	B	Travel	D	E	F	G
TRP 40-15 / 15x15	40	80	15	14	50	16	17
TRP 40-30 / 30x30	40	95	30	14	65	16	17
TRP 60-30 / 30x30	60	120	30	24	85	36	17
TRP 60-50 / 50x50	60	140	50	24	105	36	17

Values in mm

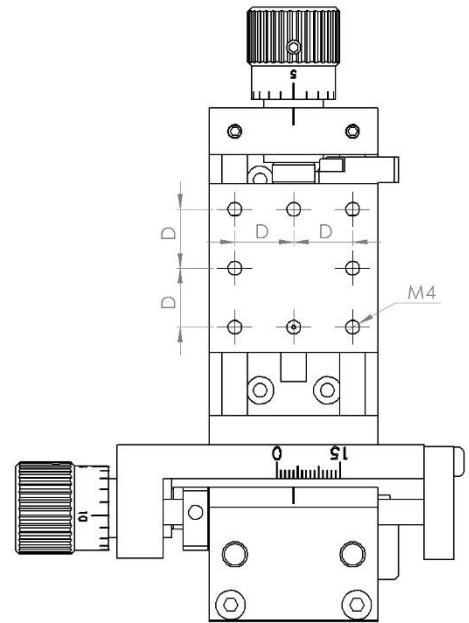
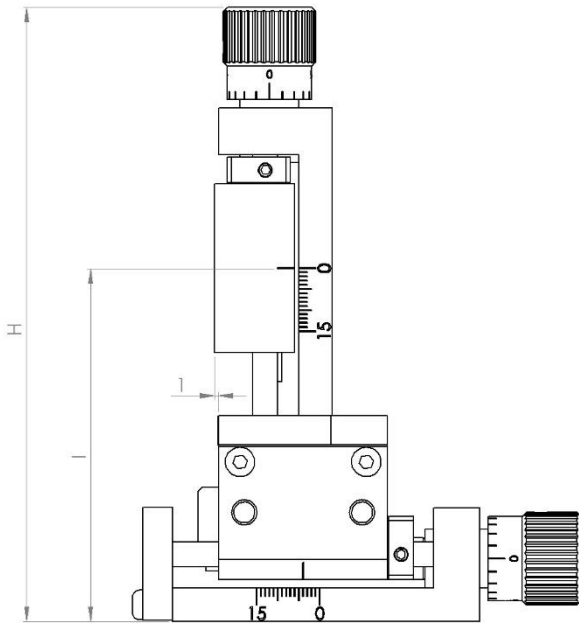
Accessories and variants

TRP control slides have a series of accessories that allow the production of systems configurable by the user for a variety of functions, such as:

VERTICAL MOUNTING AS Z-AXIS (TRP40 e TRP60)



Accessories and variants



Can be mounted in all 4 directions.

TABLE	D	H	I
TRP40 travel 15	14	132	70
TRP40 travel 15x15	14	146	84
TRP40 travel 30	14	147	85
TRP40 travel 30x30	14	161	99
TRP60 travel 30	24	172	100
TRP60 travel 30x30	24	186	114
TRP60 travel 50	24	192	120
TRP60 travel 50x50	24	206	134

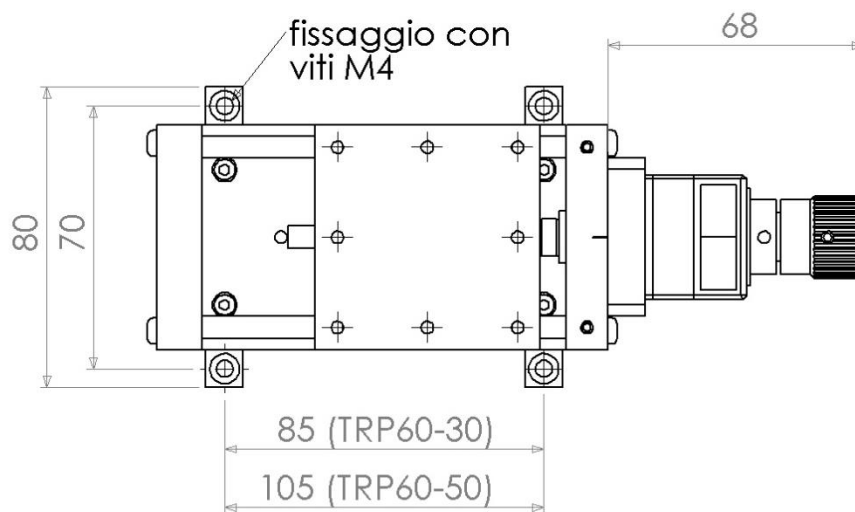
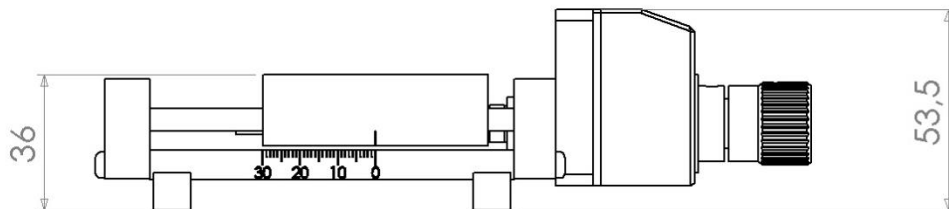
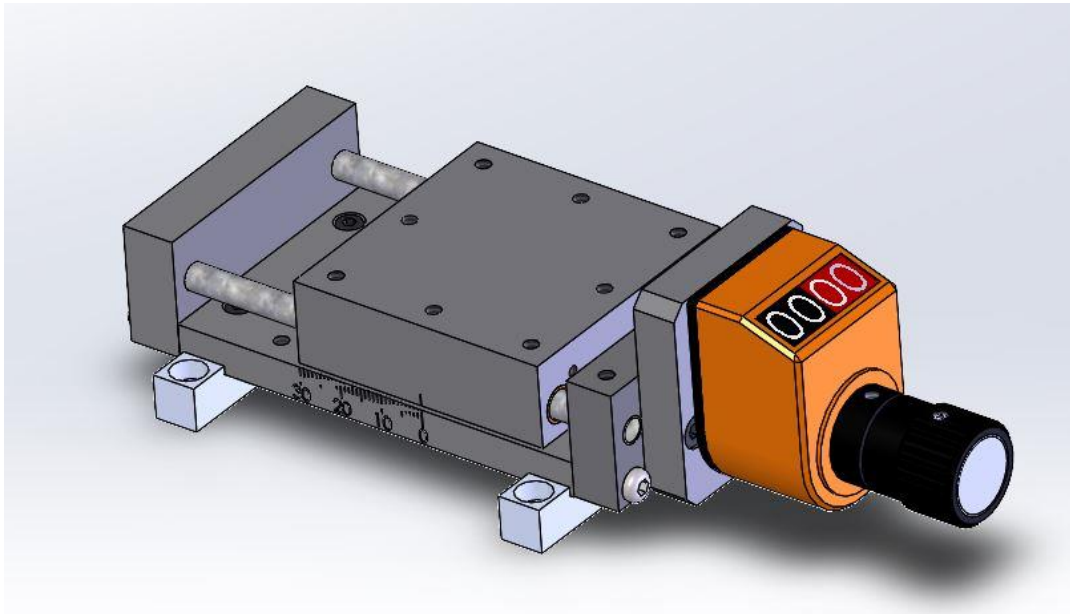
Values in mm

Accessories and variants

MECHANICAL ANALOG POSITION INDICATOR (TRP60 ONLY)

Direct readout 0.01 mm.

Riser plates.



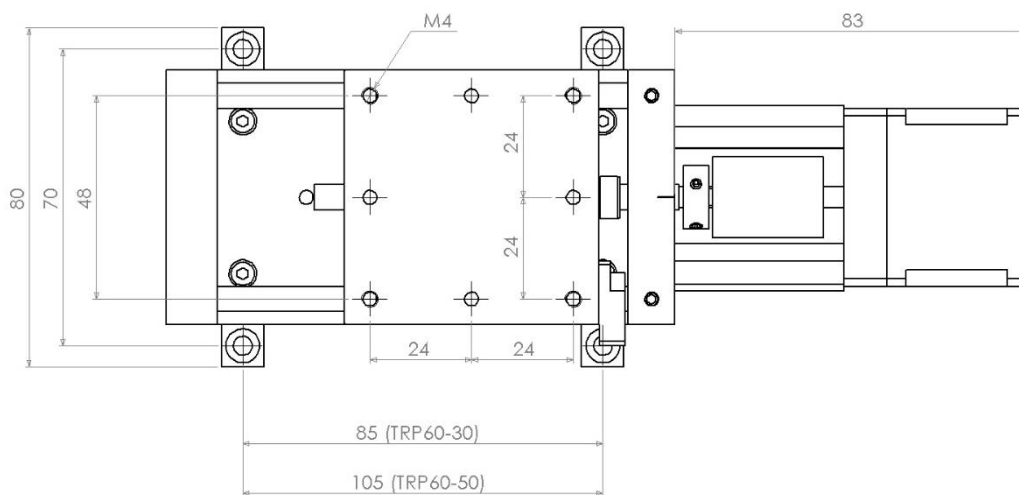
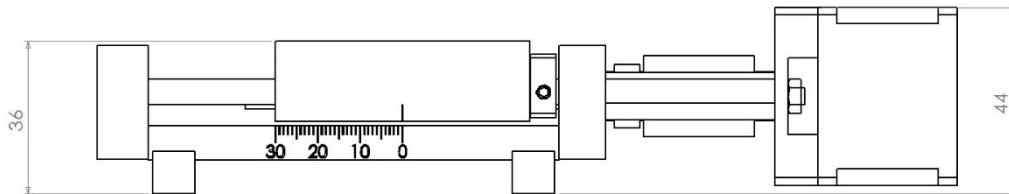
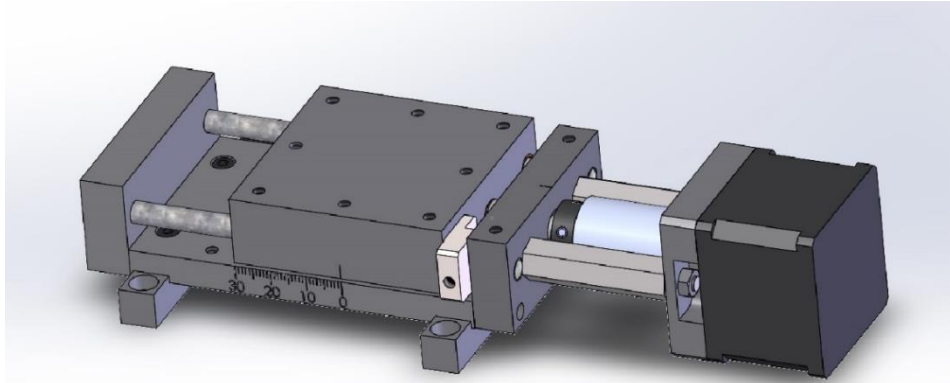
Accessories and variants

AXIS DRIVE WITH STEPPER MOTOR (TRP60)

Driven by a stepper motor, 200 pulses/revolution (1.8°). Screw $\varnothing 6$, pitch 1.

The screw slides on a self-lubricating, threaded bronze bushing that ensures durability, accuracy and reduced play (0.02 mm).

The system includes: stepper motor, spacers and fastening interface, joint. Riser plates are available if necessary.



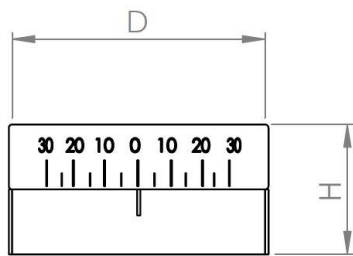
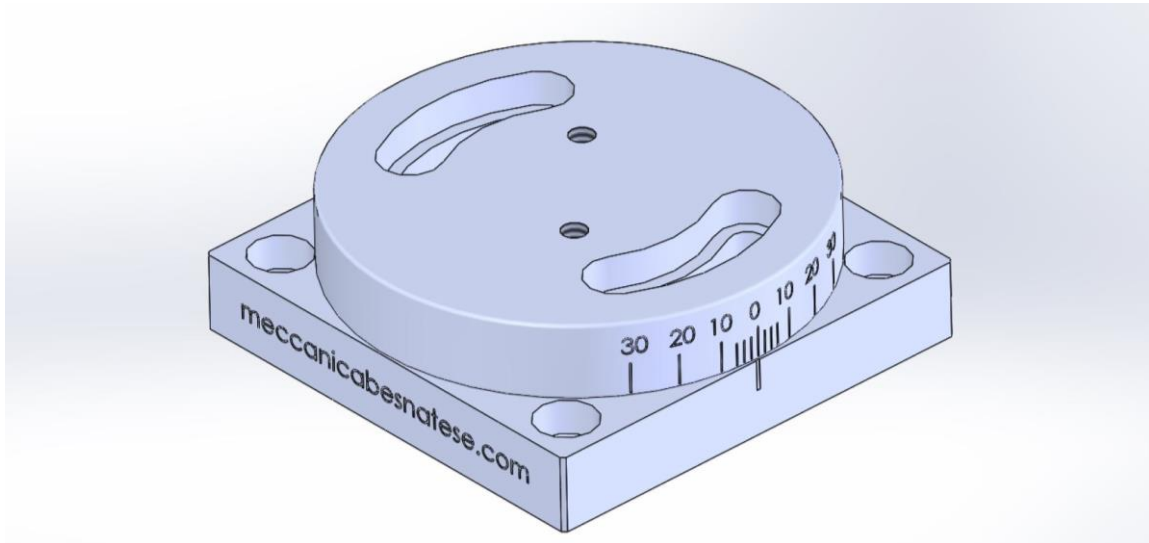
POWER	Max torque	Torque at 500 rpm	Torque at 1000 rpm
24 VDC	0.2 Nm approx. 250 rpm	0.13 Nm approx.	0.05 Nm approx.
48 VDC	0.2 Nm approx. 500 rpm	0.2 Nm	0.13 Nm approx.

Accessories and variants

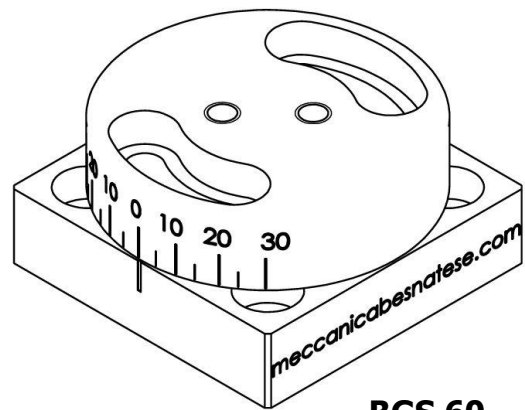
SWIVEL BASE

Manual orientation base with screw lock

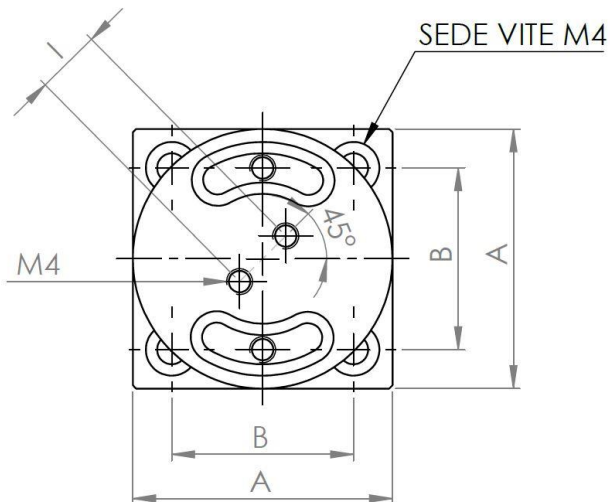
TABLE	A	B	H	D	I	Rotation
BGS 40	40	28	20	40	10	± 30°
BGS 60	60	48	20	60	20	± 30°



BGS 40



BGS 60

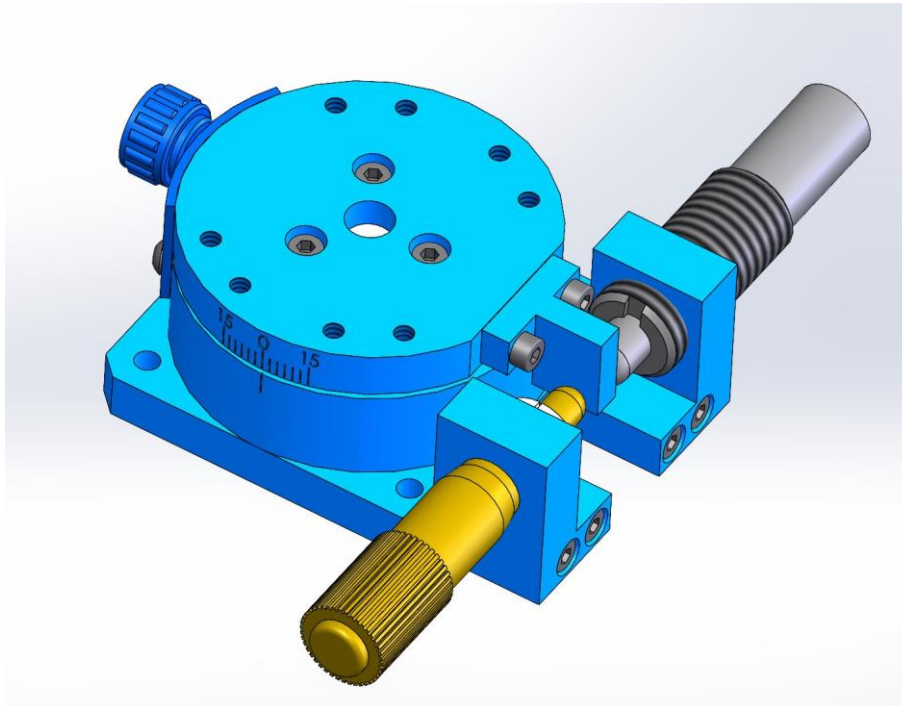


Accessories and variants

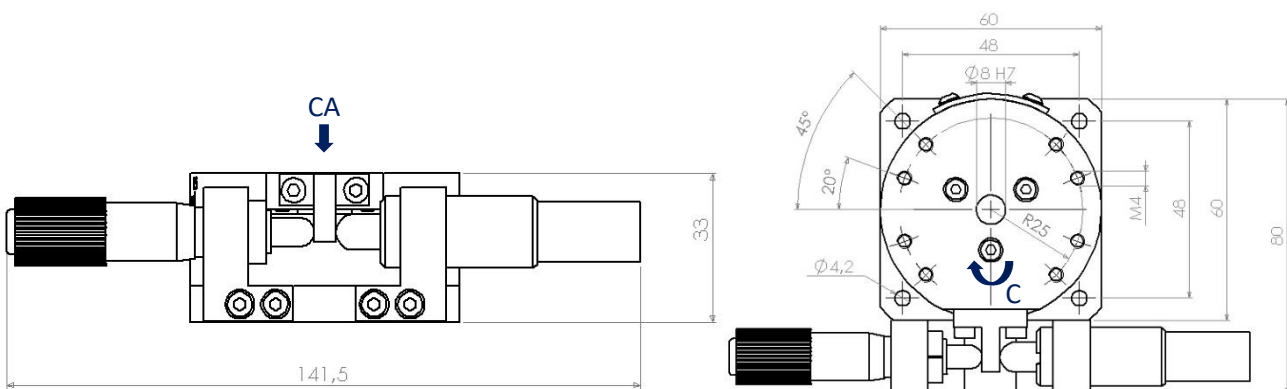
SWIVEL BASE

The swivel base allows a rotation of $\pm 15^\circ$ around its own axis. Rotation is adjusted through the use of a micrometric head and contrast pin.

It is possible to combine the swivel base with all single and double-axis models of the TRP60 table and it is possible to mount it either above or below them.

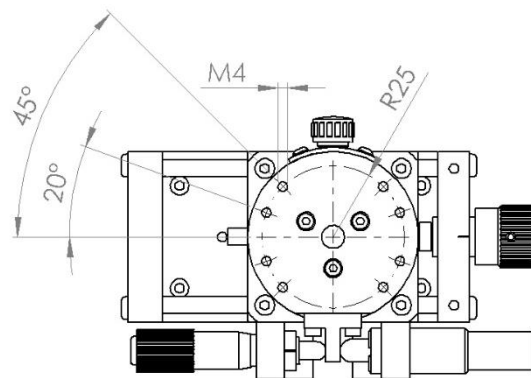
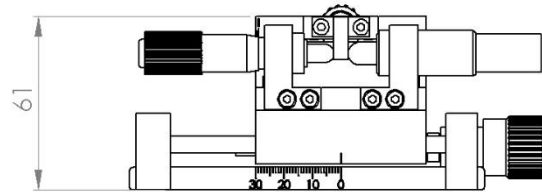


Max axial force = CA	50 N
Max torque = C	1.5 Nm

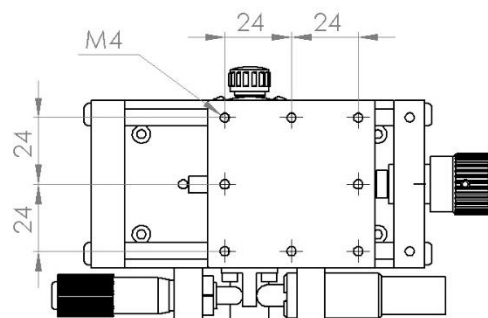
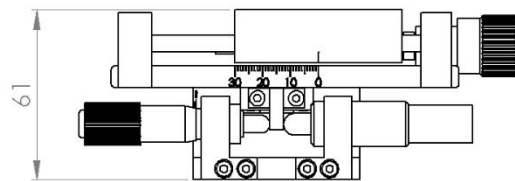


Accessories and variants

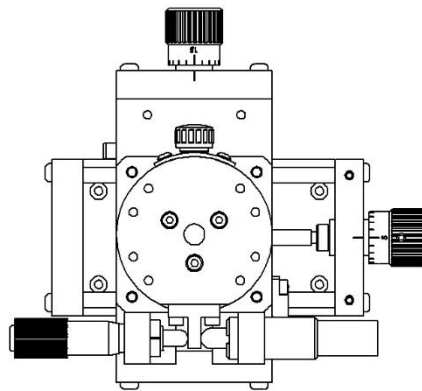
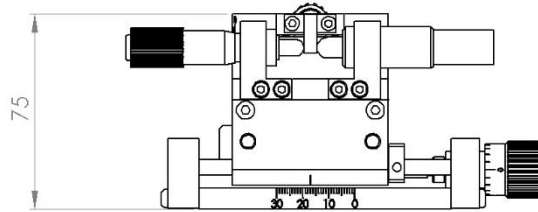
MOUNTING ABOVE SINGLE-AXIS TRP60



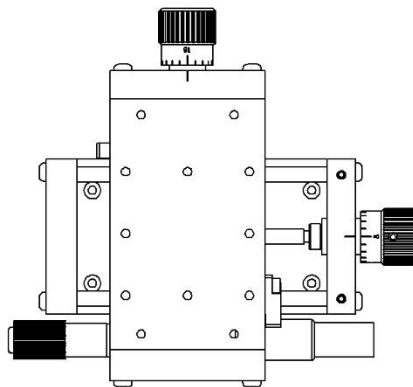
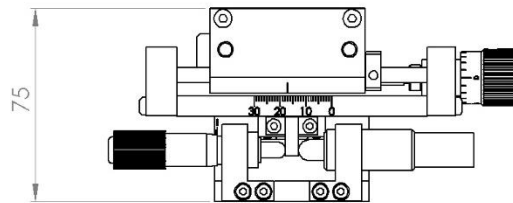
MOUNTING BELOW SINGLE-AXIS TRP60



MOUNTING ABOVE DOUBLE-AXIS TRP60



MOUNTING BELOW DOUBLE-AXIS TRP60



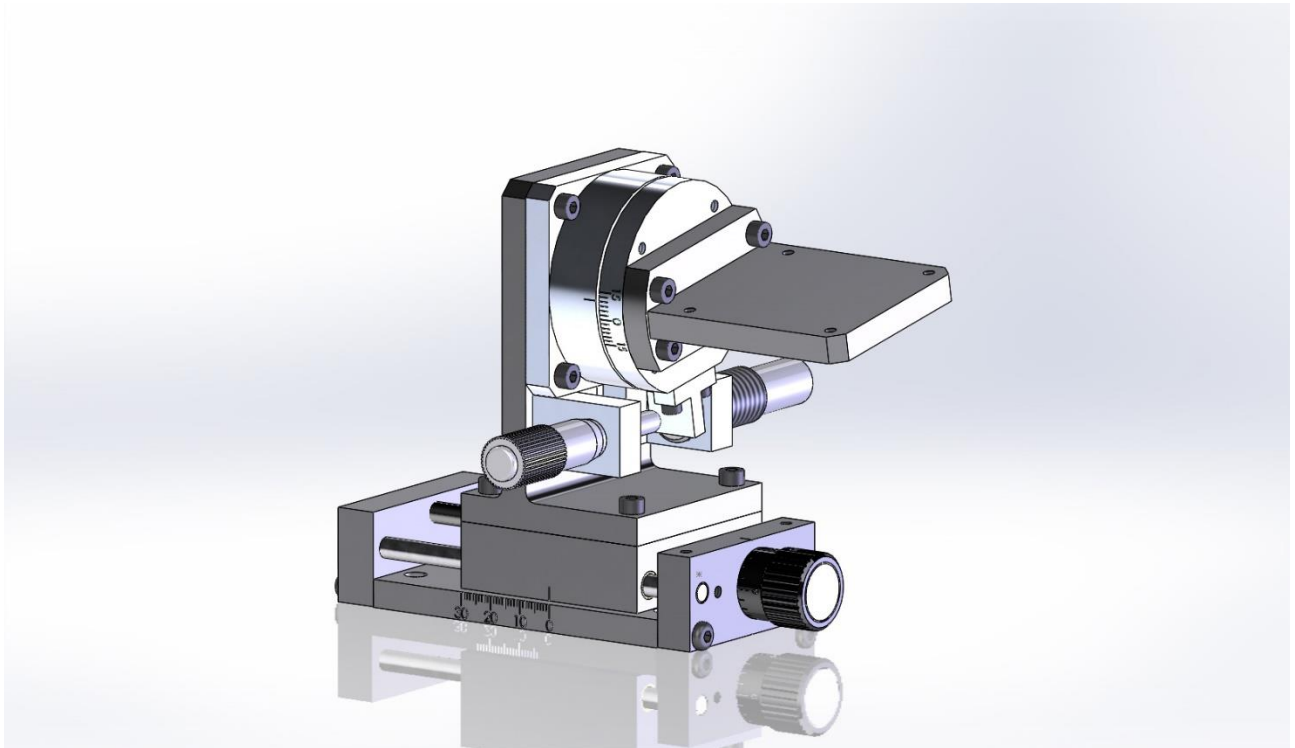
Accessories and variants

SWIVEL BASE, HORIZONTAL-AXIS MOUNTING

Using a specific square, it is possible to use the swivel base with rotation on a horizontal axis.

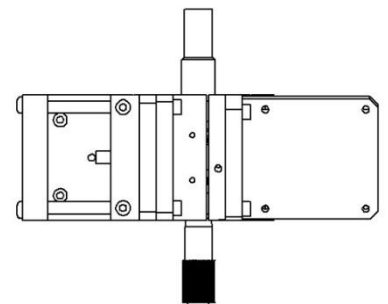
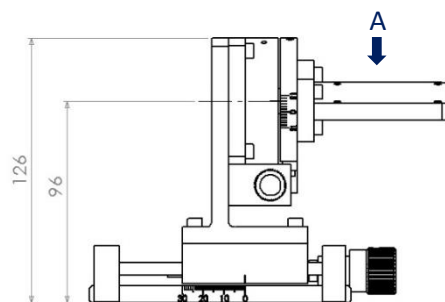
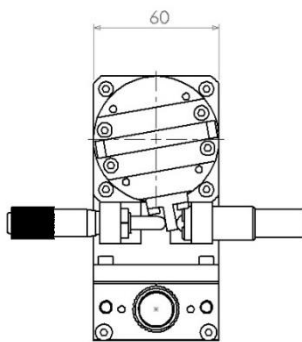
The holes provided are compatible for mounting on the TRP 60 carriage (single-axis) or on top (TRP 60XY).

Tilt range $\pm 15^\circ$



Axial load capacity = A

20 N





Certified in accordance
EN 9100:2018, AS9100D, JISQ 9100:2016
ISO 9001:2015



Meccanica Besnatese s.r.l.
P.iva 00184580124
info@meccanicabesnatese.com - Via Alfredo di Dio, 47 21010 BESNATE (VA) – Italy
Tel. +39 0331 274078 - Fax +39 0331 272328 - www.meccanicabesnatese.com